

## Dodge Timken Interchange

### Timken® Fafnir® Ball Bearing Pillow Blocks

# TIMKEN

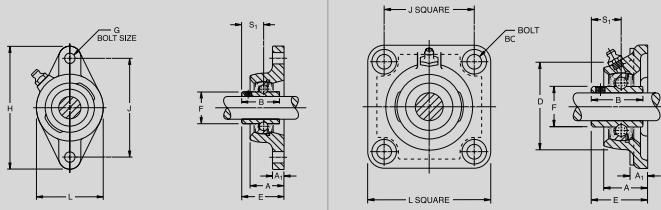
Where You Turn

PILLOW BLOCK	TIMKEN FAFNIR	DODGE	PILLOW BLOCK	TIMKEN FAFNIR	DODGE	PILLOW BLOCK	TIMKEN FAFNIR	DODGE	PILLOW BLOCK	TIMKEN FAFNIR	DODGE
Premium Eccentric Lock	RAK 1	P2B-SXRB-100	Standard Eccentric Lock	VAK 1	P2B-SXVB-100	Premium Set Screw	YAK 1	P2B-SCB-100	Standard Set Screw	SAK 1	P2B-VSCB-100
	RAS 1	P2B-SXR-100		VAS 1	P2B-SXV-100		YAS 1	P2B-SC-100		SAS 1	P2B-VSC-100

#### PILLOW BLOCKS

DODGE PN	TIMKEN-FAFNIR PN	DODGE PN	TIMKEN-FAFNIR PN	DODGE PN	TIMKEN-FAFNIR PN	DODGE PN	TIMKEN-FAFNIR PN	DODGE PN	TIMKEN-FAFNIR PN	DODGE PN	TIMKEN-FAFNIR PN
P2B-SC-008	YAK 1/2	<b>P2B-SCB-107</b>	<b>YAK 1-7/16</b>	P2B-SXR-112	RAS 1-3/4	P2B-SXRU-102	RAS 1-1/8	<b>P2B-SXVB-107</b>	<b>VAK 1-7/16</b>	P2B-VSCB-012	SAK 3/4
P2B-SC-010	YAK 5/8	P2B-SCB-108	YAK 1-1/2	<b>P2B-SXR-115</b>	<b>RAS 1-15/16</b>	<b>P2B-SXRU-103</b>	<b>RAS 1-3/16</b>	P2B-SXVB-108	VAK 1-1/2	P2B-VSCB-014	SAK 7/8
P2B-SC-012	YAS 3/4	P2B-SCB-110L	YAK 1-5/8	P2B-SXR-200L	RAS 2	P2B-SXRU-215	RAS 2-15/16	P2B-SXVB-111	VAK 1-11/16	P2B-VSCB-015	SAK 15/16
P2B-SC-014	YAS 7/8	P2B-SCB-111	YAK 1-11/16	P2B-SXR-203	RAS 2-3/16	P2B-SXV-008	VAK 1/2	P2B-SXVB-112	VAK 1-3/4	<b>P2B-VSCB-100</b>	<b>SAK 1</b>
P2B-SC-015	YAS 15/16	P2B-SCB-112	YAK 1-3/4	P2B-SXR-204	RAS 2-1/4	P2B-SXV-010	VAK 5/8	<b>P2B-SXVB-115</b>	<b>VAK 1-15/16</b>	P2B-VSCB-102	SAK 1-1/8
<b>P2B-SC-100</b>	<b>YAS 1</b>	<b>P2B-SCB-115</b>	<b>YAK 1-15/16</b>	P2B-SXR-207	RAS 2-7/16	P2B-SXV-012	VAS 3/4	P2B-SXVB-200	VAK 2S	<b>P2B-VSCB-103</b>	<b>SAK 1-3/16</b>
P2B-SC-104	YAS 1-1/4	P2B-SCB-200L	YAK 2	P2B-SXRB-012	RAK 3/4	P2B-SXV-014	VAS 7/8	P2B-SXVB-200L	VAK 2	P2B-VSCB-104	SAK 1-1/4
P2B-SC-105	YAS 1-5/16	P2B-SCB-203	YAK 2-3/16	P2B-SXRB-014	RAK 7/8	P2B-SXV-015	VAS 15/16	P2B-SXVB-203	VAK 2-3/16	P2B-VSCB-104S	SAK 1-1/4S
P2B-SC-106	YAS 1-3/8	P2B-SCB-204L	YAK 2-1/4	P2B-SXRB-015	RAK 15/16	<b>P2B-SXV-100</b>	<b>VAS 1</b>	P2B-SXVU-008	VAS 1/2	P2B-VSCB-106	SAK 1-3/8
<b>P2B-SC-107</b>	<b>YAS 1-7/16</b>	P2B-SCB-207	YAK 2-7/16	<b>P2B-SXRB-100</b>	<b>RAK 1</b>	P2B-SXV-104	VAS 1-1/4	P2B-SXVU-010	VAS 5/8	<b>P2B-VSCB-107</b>	<b>SAK 1-7/16</b>
P2B-SC-108	YAS 1-1/2H	P2B-SCB-215	YAK 2-15/16	P2B-SXRB-101	RAK 1-1/16	P2B-SXV-105	VAS 1-5/16	P2B-SXVU-101	VAS 1-1/16	P2B-VSCB-108	SAK 1-1/2
P2B-SC-110L	YAS 1-5/8	P2B-SCU-008	YAS 1/2	P2B-SXRB-102	RAK 1-1/8	P2B-SXV-106	VAS 1-3/8	P2B-SXVU-102	VAS 1-1/8	P2B-VSCB-111	SAK 1-11/16
P2B-SC-111	YAS 1-11/16	P2B-SCU-010	YAS 5/8	<b>P2B-SXRB-103</b>	<b>RAK 1-3/16</b>	<b>P2B-SXV-107</b>	<b>VAS 1-7/16</b>	<b>P2B-SXVU-103</b>	<b>VAS 1-3/16</b>	P2B-VSCB-112	SAK 1-3/4
P2B-SC-112	YAS 1-3/4	P2B-SCU-011	YAS 1-1/16	P2B-SXRB-104	RAK 1-1/4	P2B-SXV-111	VAS 1-11/16	P2B-SXVU-104S	VAS 1-1/4S	<b>P2B-VSCB-115</b>	<b>SAK 1-15/16</b>
<b>P2B-SC-115</b>	<b>YAS 1-15/16</b>	P2B-SCU-102	YAS 1-1/8	P2B-SXRB-105	RAK 1-5/16	P2B-SXV-112	VAS 1-3/4	P2B-VSC-008	SAK 1/2	P2B-VSCB-200	SAK 2S
P2B-SC-200	YAS 2S	<b>P2B-SCU-103</b>	<b>YAS 1-3/16</b>	P2B-SXRB-106	RAK 1-3/8	<b>P2B-SXV-115</b>	<b>VAS 1-15/16</b>	P2B-VSC-010	SAK 5/8	P2B-VSCB-200L	SAK 2
P2B-SC-203	YAS 2-3/16	P2B-SCU-104S	YAS 1-1/4S	<b>P2B-SXRB-107</b>	<b>RAK 1-7/16</b>	P2B-SXV-200	VAS 2	P2B-VSC-012	SAS 3/4	P2B-VSCB-203	SAK 2-3/16
P2B-SC-207	YAS 2-7/16	P2B-SCU-215	YAS 2-15/16	P2B-SXRB-108	RAK 1-1/2	P2B-SXV-200L	VAS 2	P2B-VSC-014	SAS 7/8	P2B-VSCU-008	SAS 1/2
P2B-SC-211	YAS 2-11/16	P2B-SXR-008	RAK 1/2	P2B-SXRB-110	RAK 1-5/8	P2B-SXV-203	VAS 2-3/16	P2B-VSC-015	SAS 15/16	P2B-VSCU-010	SAS 5/8
P2B-SCB-012	YAK 3/4	P2B-SXR-010	RAK 5/8	P2B-SXRB-111	RAK 1-11/16	P2B-SXVB-012	VAK 3/4	<b>P2B-VSC-100</b>	<b>SAS 1</b>	P2B-VSCU-102	SAS 1-1/8
P2B-SCB-014	YAK 7/8	P2B-SXR-012	RAS 3/4	P2B-SXRB-112	RAK 1-3/4	P2B-SXVB-014	VAK 7/8	P2B-VSC-104	SAS 1-1/4	<b>P2B-VSCU-103</b>	<b>SAS 1-3/16</b>
P2B-SCB-015	YAK 15/16	P2B-SXR-014	RAS 7/8	<b>P2B-SXRB-115</b>	<b>RAK 1-15/16</b>	P2B-SXVB-015	VAK 15/16	P2B-VSC-106	SAS 1-3/8	P2B-VSCU-104S	SAS 1-1/4S
<b>P2B-SCB-100</b>	<b>YAK 1</b>	P2B-SXR-015	RAS 15/16	P2B-SXRB-200L	RAK 2	<b>P2B-SXVB-100</b>	<b>VAK 1</b>	<b>P2B-VSC-107</b>	<b>SAS 1-7/16</b>		
P2B-SCB-101	YAK 1-1/16	<b>P2B-SXR-100</b>	<b>RAS 1</b>	P2B-SXRB-203	RAK 2-3/16	P2B-SXVB-101	VAK 1-1/16	P2B-VSC-108	SAS 1-1/2H		
P2B-SCB-102	YAK 1-1/8	P2B-SXR-104	RAS 1-1/4	P2B-SXRB-204	RAK 2-1/4	P2B-SXVB-102	VAK 1-1/8	P2B-VSC-111	SAS 1-11/16		
<b>P2B-SCB-103</b>	<b>YAK 1-3/16</b>	P2B-SXR-105	RAS 1-5/16	P2B-SXRB-207	RAK 2-7/16	<b>P2B-SXVB-103</b>	<b>VAK 1-3/16</b>	P2B-VSC-112	SAS 1-3/4		
P2B-SCB-104	YAK 1-1/4	P2B-SXR-106	RAS 1-3/8	P2B-SXRB-215	RAK 2-15/16	P2B-SXVB-104	VAK 1-1/4	<b>P2B-VSC-115</b>	<b>SAS 1-15/16</b>		
P2B-SCB-104S	YAK 1-1/4S	<b>P2B-SXR-107</b>	<b>RAS 1-7/16</b>	P2B-SXRU-008	RAS 1/2	P2B-SXVB-104S	VAK 1-1/4S	P2B-VSC-200	SAS 2S		
P2B-SCB-105	YAK 1-5/16	P2B-SXR-110	RAS 1-5/8	P2B-SXRU-010	RAS 5/8	P2B-SXVB-105	VAK 1-5/16	P2B-VSC-200L	SAS 2		
P2B-SCB-106	YAK 1-3/8	P2B-SXR-111	RAS 1-11/16	P2B-SXRU-101	RAS 1-1/16	P2B-SXVB-106	VAK 1-3/8	P2B-VSC-203	SAS 2-3/16		

NOTE: Timken has made every effort to ensure the accuracy of this interchange, however, Timken is not liable for any errors or omissions. Dimension for length along the shaft varies from manufacturer to manufacturer with regard to flange units.



## Dodge Timken Interchange

### Timken® Fafnir® Ball Bearing 2-Bolt/4-Bolt Flange Units

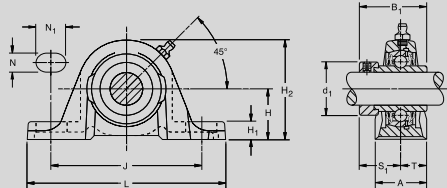
# TIMKEN

Where You Turn

2-BOLT / 4-BOLT	TIMKEN FAFNIR	DODGE	2-BOLT / 4-BOLT	TIMKEN FAFNIR	DODGE	2-BOLT / 4-BOLT	TIMKEN FAFNIR	DODGE	2-BOLT / 4-BOLT	TIMKEN FAFNIR	DODGE
Premium Eccentric Lock	RCJT 1	F2B-SXR-100	Standard Eccentric Lock	VCJT 1	F2B-SXV-100	Premium Set Screw	YCJT 1	F2B-SC-100	Standard Set Screw	SCJT 1	F2B-VSC-100
	RCJ 1	F4B-SXR-100		VCJ 1	F4B-SXV-100		YCJ 1	F4B-SC-100		SCJ 1	F4B-VSC-100

2-BOLT FLANGE UNITS						4-BOLT FLANGE UNITS					
DODGE PN	TIMKEN-FAFNIR PN	DODGE PN	TIMKEN-FAFNIR PN	DODGE PN	TIMKEN-FAFNIR PN	DODGE PN	TIMKEN-FAFNIR PN	DODGE PN	TIMKEN-FAFNIR PN	DODGE PN	TIMKEN-FAFNIR PN
F2B-SC-008	YCJT 1/2	F2B-SXR-104	RCJT 1-1/4	F2B-SXV-200	VCJT 2S	F4B-SC-008	YCJ 1/2	<b>F4B-SXR-100</b>	<b>RCJ 1</b>	F4B-SXV-106	VCJ 1-3/8
F2B-SC-010	YCJT 5/8	F2B-SXR-104S	RCJT 1-1/4S	F2B-SXV-200L	VCJT 2	F4B-SC-008L	YCJ 1/2	F4B-SXR-101	RCJ 1-1/16	<b>F4B-SXV-107</b>	<b>VCJ 1-7/16</b>
F2B-SC-012	YCJT 3/4	F2B-SXR-105	RCJT 1-5/16	F2B-SXV-203	VCJT 2-3/16	F4B-SC-010	YCJ 5/8	F4B-SXR-102	RCJ 1-1/8	F4B-SXV-108	VCJ 1-1/2
F2B-SC-014	YCJT 7/8	F2B-SXR-106	RCJT 1-3/8	F2B-VSC-008	SCJT 1/2	F4B-SC-012	YCJ 3/4	<b>F4B-SXR-103</b>	<b>RCJ 1-3/16</b>	F4B-SXV-111	VCJ 1-11/16
F2B-SC-015	YCJT 15/16	<b>F2B-SXR-107</b>	<b>RCJT 1-7/16</b>	F2B-VSC-010	SCJT 5/8	F4B-SC-014	YCJ 7/8	F4B-SXR-104	RCJ 1-1/4	F4B-SXV-112	VCJ 1-3/4
<b>F2B-SC-100</b>	<b>YCJT 1</b>	F2B-SXR-108	RCJT 1-1/2	F2B-VSC-012	SCJT 3/4	F4B-SC-015	YCJ 15/16	F4B-SXR-105	RCJ 1-5/16	<b>F4B-SXV-115</b>	<b>VCJ 1-15/16</b>
F2B-SC-101	YCJT 1-1/16	F2B-SXR-110	RCJT 1-5/8	F2B-VSC-014	SCJT 7/8	<b>F4B-SC-100</b>	<b>YCJ 1</b>	F4B-SXR-106	RCJ 1-3/8	F4B-SXV-200	VCJ 2S
F2B-SC-102	YCJT 1-1/8	F2B-SXR-111	RCJT 1-11/16	F2B-VSC-015	SCJT 15/16	F4B-SC-101	YCJ 1-1/16	<b>F4B-SXR-107</b>	<b>RCJ 1-7/16</b>	F4B-SXV-200L	VCJ 2
<b>F2B-SC-103</b>	<b>YCJT 1-3/16</b>	F2B-SXR-112	RCJT 1-3/4	<b>F2B-VSC-100</b>	<b>SCJT 1</b>	F4B-SC-102	YCJ 1-1/8	F4B-SXR-108	RCJ 1-1/2	F4B-SXV-203	VCJ 2-3/16
F2B-SC-104	YCJT 1-1/4	<b>F2B-SXR-115</b>	<b>RCJT 1-15/16</b>	F2B-VSC-102	SCJT 1-1/8	<b>F4B-SC-103</b>	<b>YCJ 1-3/16</b>	F4B-SXR-110	RCJ 1-5/8	F4B-VSC-008	SCJ 1/2
F2B-SC-104S	YCJT 1-1/4S	F2B-SXR-200L	RCJT 2	<b>F2B-VSC-103</b>	<b>SCJT 1-3/16</b>	F4B-SC-104	YCJ 1-1/4	F4B-SXR-111	RCJ 1-11/16	F4B-VSC-010	SCJ 5/8
F2B-SC-105	YCJT 1-5/16	F2B-SXR-203	RCJT 2-3/16	F2B-VSC-104	SCJT 1-1/4	F4B-SC-104S	YCJ 1-1/4S	F4B-SXR-112	RCJ 1-3/4	F4B-VSC-012	SCJ 3/4
F2B-SC-106	YCJT 1-3/8	F2B-SXV-008	VCJT 1/2	F2B-VSC-104S	SCJT 1-1/4S	F4B-SC-105	YCJ 1-5/16	<b>F4B-SXR-115</b>	<b>RCJ 1-15/16</b>	F4B-VSC-014	SCJ 7/8
<b>F2B-SC-107</b>	<b>YCJT 1-7/16</b>	F2B-SXV-010	VCJT 5/8	F2B-VSC-106	SCJT 1-3/8	F4B-SC-106	YCJ 1-3/8	F4B-SXR-200L	RCJ 2	F4B-VSC-015	SCJ 15/16
F2B-SC-108	YCJT 1-1/2	F2B-SXV-012	VCJT 3/4	<b>F2B-VSC-107</b>	<b>SCJT 1-7/16</b>	<b>F4B-SC-107</b>	<b>YCJ 1-7/16</b>	F4B-SXR-203	RCJ 2-3/16	<b>F4B-VSC-100</b>	<b>SCJ 1</b>
F2B-SC-110L	YCJT 1-5/8	F2B-SXV-014	VCJT 7/8	F2B-VSC-108	SCJT 1-1/2	F4B-SC-108	YCJ 1-1/2	F4B-SXR-204	RCJ 2-1/4	F4B-VSC-102	SCJ 1-1/8
F2B-SC-111	YCJT 1-11/16	F2B-SXV-015	VCJT 15/16	F2B-VSC-111	SCJT 1-11/16	F4B-SC-110L	YCJ 1-5/8	F4B-SXR-207	RCJ 2-7/16	<b>F4B-VSC-103</b>	<b>SCJ 1-3/16</b>
F2B-SC-112	YCJT 1-3/4	<b>F2B-SXV-100</b>	<b>VCJT 1</b>	F2B-VSC-112	SCJT 1-3/4	F4B-SC-111	YCJ 1-11/16	F4B-SXR-215	RCJ 2-15/16	F4B-VSC-104	SCJ 1-1/4
F2B-SC-113	YCJT 1-13/16	F2B-SXV-101	VCJT 1-1/16	<b>F2B-VSC-115</b>	<b>SCJT 1-15/16</b>	F4B-SC-112	YCJ 1-3/4	F4B-SXV-008	VCJ 1/2	F4B-VSC-104S	SCJ 1-1/4S
<b>F2B-SC-115</b>	<b>YCJT 1-15/16</b>	F2B-SXV-102	VCJT 1-1/8	F2B-VSC-200	SCJT 2S	<b>F4B-SC-115</b>	<b>YCJ 1-15/16</b>	F4B-SXV-010	VCJ 5/8	F4B-VSC-106	SCJ 1-3/8
F2B-SC-203	YCJT 2-3/16	<b>F2B-SXV-103</b>	<b>VCJT 1-3/16</b>	F2B-VSC-200L	SCJT 2	F4B-SC-200	YCJ 2S	F4B-SXV-012	VCJ 3/4	<b>F4B-VSC-107</b>	<b>SCJ 1-7/16</b>
F2B-SXR-008	RCJT 1/2	F2B-SXV-104	VCJT 1-1/4	F2B-VSC-203	SCJT 2-3/16	F4B-SC-203	YCJ 2-3/16	F4B-SXV-014	VCJ 7/8	F4B-VSC-108	SCJ 1-1/2
F2B-SXR-010	RCJT 5/8	F2B-SXV-104S	VCJT 1-1/4S			F4B-SC-207	YCJ 2-7/16	F4B-SXV-015	VCJ 15/16	F4B-VSC-111	SCJ 1-11/16
F2B-SXR-012	RCJT 3/4	F2B-SXV-105	VCJT 1-5/16			F4B-SC-211	YCJ 2-11/16	<b>F4B-SXV-100</b>	<b>VCJ 1</b>	F4B-VSC-112	SCJ 1-3/4
F2B-SXR-014	RCJT 7/8	F2B-SXV-106	VCJT 1-3/8			F4B-SC-215	YCJ 2-15/16	F4B-SXV-101	VCJ 1-1/16	<b>F4B-VSC-115</b>	<b>SCJ 1-15/16</b>
F2B-SXR-015	RCJT 15/16	<b>F2B-SXV-107</b>	<b>VCJT 1-7/16</b>			F4B-SXR-008	RCJ 1/2	F4B-SXV-102	VCJ 1-1/8	F4B-VSC-200	SCJ 2S
<b>F2B-SXR-100</b>	<b>RCJT 1</b>	F2B-SXV-108	VCJT 1-1/2			F4B-SXR-010	RCJ 5/8	<b>F4B-SXV-103</b>	<b>VCJ 1-3/16</b>	F4B-VSC-200L	SCJ 2
F2B-SXR-101	RCJT 1-1/16	F2B-SXV-111	VCJT 1-11/16			F4B-SXR-012	RCJ 3/4	F4B-SXV-104	VCJ 1-1/4	F4B-VSC-203	SCJ 2-3/16
F2B-SXR-102	RCJT 1-1/8	F2B-SXV-112	VCJT 1-3/4			F4B-SXR-014	RCJ 7/8	F4B-SXV-104S	VCJ 1-1/4S		
<b>F2B-SXR-103</b>	<b>RCJT 1-3/16</b>	<b>F2B-SXV-115</b>	<b>VCJT 1-15/16</b>			F4B-SXR-015	RCJ 15/16	F4B-SXV-105	VCJ 1-5/16		

NOTE: Timken has made every effort to ensure the accuracy of this interchange, however, Timken is not liable for any errors or omissions. Dimension for length along the shaft varies from manufacturer to manufacturer with regard to flange units.



## Browning Timken Interchange

Timken® Fafnir® Ball Bearing Pillow Blocks

# TIMKEN

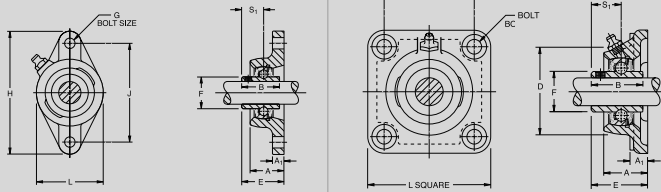
Where You Turn

PILLOW BLOCK	TIMKEN FAFNIR	BROWNING	PILLOW BLOCK	TIMKEN FAFNIR	BROWNING	PILLOW BLOCK	TIMKEN FAFNIR	BROWNING	PILLOW BLOCK	TIMKEN FAFNIR	BROWNING
Premium Eccentric Lock	RAK 1	VPLE-216	Standard Eccentric Lock	VAK 1	VPLE-116	Premium Set Screw	YAK 1	VPLS-216	Standard Set Screw	SAK 1	VPLS-116
	RAS 1	VPE-216		VAS 1	VPE-116		YAS 1	VPS-216		SAS 1	VPS-116

### PILLOW BLOCKS

BROWNING PN	TIMKEN-FAFNIR PN	BROWNING PN	TIMKEN-FAFNIR PN	BROWNING PN	TIMKEN-FAFNIR PN	BROWNING PN	TIMKEN-FAFNIR PN	BROWNING PN	TIMKEN-FAFNIR PN	BROWNING PN	TIMKEN-FAFNIR PN
VPE-108	VAS 1/2	<b>VPE-223</b>	<b>RAS 1-7/16</b>	VPLE-208	RAK 1/2	<b>VPLS-119</b>	<b>SAK 1-3/16</b>	VPLS-232S	YAK 2S	<b>VPS-216</b>	<b>YAS 1</b>
VPE-110	VAS 5/8	VPE-224	RAS 1-1/2	VPLE-210	RAK 5/8	VPLS-120	SAK 1-1/4	VPLS-235	YAK 2-3/16	VPS-218	YAS 1-1/8
VPE-112	VAS 3/4	VPE-226	RAS 1-5/8	VPLE-212	RAK 3/4	VPLS-120S	SAK 1-1/4S	VPLS-236	YAK 2-1/4	<b>VPS-219</b>	<b>YAS 1-3/16</b>
VPE-114	VAS 7/8	VPE-227	RAS 1-11/16	VPLE-214	RAK 7/8	VPLS-122	SAK 1-3/8	VPLS-239	YAK 2-7/16	VPS-220	YAS 1-1/4
VPE-115	VAS 15/16	VPE-228	RAS 1-3/4	VPLE-215	RAK 15/16	<b>VPLS-123</b>	<b>SAK 1-7/16</b>	VPLS-243	YAK 2-11/16	VPS-220S	YAS 1-1/4S
<b>VPE-116</b>	<b>VAS 1</b>	<b>VPE-231</b>	<b>RAS 1-15/16</b>	<b>VPLE-216</b>	<b>RAK 1</b>	VPLS-124	SAK 1-1/2	VPLS-247	YAK 2-15/16	VPS-222	YAS 1-3/8
VPE-118	VAS 1-1/8	VPE-232	RAS 2	VPLE-218	RAK 1-1/8	VPLS-127	SAK 1-11/16	VPS-108	SAS 1/2	<b>VPS-223</b>	<b>YAS 1-7/16</b>
<b>VPE-119</b>	<b>VAS 1-3/16</b>	VPE-235	RAS 2-3/16	<b>VPLE-219</b>	<b>RAK 1-3/16</b>	VPLS-128	SAK 1-3/4	VPS-110	SAS 5/8	VPS-224	YAS 1-1/2
VPE-120	VAS 1-1/4	VPE-236	RAS 2-1/4	VPLE-220	RAK 1-1/4	<b>VPLS-131</b>	<b>SAK 1-15/16</b>	VPS-112	SAS 3/4	VPS-226	YAS 1-5/8
VPE-120S	VAS 1-1/4S	VPE-239	RAS 2-7/16	VPLE-220S	RAK 1-1/4S	VPLS-132	SAK 2	VPS-114	SAS 7/8	VPS-227	YAS 1-11/16
VPE-122	VAS 1-3/8	VPE-247	RAS 2-15/16	VPLE-222	RAK 1-3/8	VPLS-132S	SAK 2S	VPS-115	SAS 15/16	VPS-228	YAS 1-3/4
<b>VPE-123</b>	<b>VAS 1-7/16</b>	VPLE-108	VAK 1/2	<b>VPLE-223</b>	<b>RAK 1-7/16</b>	VPLS-135	SAK 2-3/16	<b>VPS-116</b>	<b>SAS 1</b>	<b>VPS-231</b>	<b>YAS 1-15/16</b>
VPE-124	VAS 1-1/2	VPLE-110	VAK 5/8	VPLE-224	RAK 1-1/2	VPLS-208	YAK 1/2	VPS-118	SAS 1-1/8	VPS-232	YAS 2
VPE-127	VAS 1-11/16	VPLE-112	VAK 3/4	VPLE-226	RAK 1-5/8	VPLS-210	YAK 5/8	<b>VPS-119</b>	<b>SAS 1-3/16</b>	VPS-232S	YAS 2S
VPE-128	VAS 1-3/4	VPLE-114	VAK 7/8	VPLE-227	RAK 1-11/16	VPLS-212	YAK 3/4	VPS-120	SAS 1-1/4	VPS-235	YAS 2-3/16
<b>VPE-131</b>	<b>VAS 1-15/16</b>	VPLE-115	VAK 15/16	VPLE-228	RAK 1-3/4	VPLS-214	YAK 7/8	VPS-120S	SAS 1-1/4S	VPS-236	YAS 2-1/4
VPE-132	VAS 2	<b>VPLE-116</b>	<b>VAK 1</b>	<b>VPLE-231</b>	<b>RAK 1-15/16</b>	VPLS-215	YAK 15/16	VPS-122	SAS 1-3/8	VPS-239	YAS 2-7/16
VPE-132S	VAS 2S	VPLE-118	VAK 1-1/8	VPLE-232	RAK 2	<b>VPLS-216</b>	<b>YAK 1</b>	<b>VPS-123</b>	<b>SAS 1-7/16</b>	VPS-247	YAS 2-15/16
VPE-135	VAS 2-3/16	<b>VPLE-119</b>	<b>VAK 1-3/16</b>	VPLE-235	RAK 2-3/16	VPLS-218	YAK 1-1/8	VPS-124	SAS 1-1/2		
VPE-208	RAS 1/2	VPLE-120	VAK 1-1/4	VPLE-236	RAK 2-1/4	<b>VPLS-219</b>	<b>YAK 1-3/16</b>	VPS-127	SAS 1-11/16		
VPE-210	RAS 5/8	VPLE-120S	VAK 1-1/4S	VPLE-239	RAK 2-7/16	VPLS-220	YAK 1-1/4	VPS-128	SAS 1-3/4		
VPE-212	RAS 3/4	VPLE-122	VAK 1-3/8	VPLE-243	RAK 2-11/16	VPLS-220S	YAK 1-1/4S	<b>VPS-131</b>	<b>SAS 1-15/16</b>		
VPE-214	RAS 7/8	<b>VPLE-123</b>	<b>VAK 1-7/16</b>	VPLE-247	RAK 2-15/16	VPLS-222	YAK 1-3/8	VPS-132	SAS 2		
VPE-215	RAS 15/16	VPLE-124	VAK 1-1/2	VPLS-108	SAK 1/2	<b>VPLS-223</b>	<b>YAK 1-7/16</b>	VPS-132S	SAS 2S		
<b>VPE-216</b>	<b>RAS 1</b>	VPLE-127	VAK 1-11/16	VPLS-110	SAK 5/8	VPLS-224	YAK 1-1/2	VPS-135	SAS 2-3/16		
VPE-218	RAS 1-1/8	VPLE-128	VAK 1-3/4	VPLS-112	SAK 3/4	VPLS-226	YAK 1-5/8	VPS-208	YAS 1/2		
<b>VPE-219</b>	<b>RAS 1-3/16</b>	<b>VPLE-131</b>	<b>VAK 1-15/16</b>	VPLS-114	SAK 7/8	VPLS-227	YAK 1-11/16	VPS-210	YAS 5/8		
VPE-220	RAS 1-1/4	VPLE-132	VAK 2	VPLS-115	SAK 15/16	VPLS-228	YAK 1-3/4	VPS-212	YAS 3/4		
VPE-220S	RAS 1-1/4S	VPLE-132S	VAK 2S	<b>VPLS-116</b>	<b>SAK 1</b>	<b>VPLS-231</b>	<b>YAK 1-15/16</b>	VPS-214	YAS 7/8		
VPE-222	RAS 1-3/8	VPLE-135	VAK 2-3/16	VPLS-118	SAK 1-1/8	VPLS-232	YAK 2	VPS-215	YAS 15/16		

NOTE: Timken has made every effort to ensure the accuracy of this interchange, however, Timken is not liable for any errors or omissions. Dimension for length along the shaft varies from manufacturer to manufacturer with regard to flange units.



## Browning Timken Interchange

Timken® Fafnir® Ball Bearing 2-Bolt/4-Bolt Flange Units

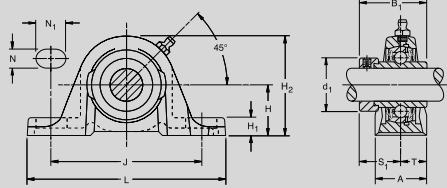
# TIMKEN

Where You Turn

2-BOLT / 4-BOLT	TIMKEN FAFNIR	BROWNING	2-BOLT / 4-BOLT	TIMKEN FAFNIR	BROWNING	2-BOLT / 4-BOLT	TIMKEN FAFNIR	BROWNING	2-BOLT / 4-BOLT	TIMKEN FAFNIR	BROWNING
Premium Eccentric Lock	RCJT 1	VF2E-216	Standard Eccentric Lock	VCJT 1	VF2E-116	Premium Set Screw	YCJT 1	VF2S-216	Standard Set Screw	SCJT 1	VF2S-116
	RCJ 1	VF4E-216		VCJ 1	VF4E-116		YCJ 1	VF4S-216		SCJ 1	VF4S-116

2-BOLT FLANGE UNITS						4-BOLT FLANGE UNITS					
BROWNING PN	TIMKEN-FAFNIR PN	BROWNING PN	TIMKEN-FAFNIR PN	BROWNING PN	TIMKEN-FAFNIR PN	BROWNING PN	TIMKEN-FAFNIR PN	BROWNING PN	TIMKEN-FAFNIR PN	BROWNING PN	TIMKEN-FAFNIR PN
VF2E-108	VCJT 1/2	<b>VF2E-223</b>	<b>RCJT 1-7/16</b>	VF2S-135	SCJT 2-3/16	VF4E-108	VCJ 1/2	VF4E-224	RCJ 1-1/2	VF4S-208	YCJ 1/2
VF2E-110	VCJT 5/8	VF2E-224	RCJT 1-1/2	VF2S-208	YCJT 1/2	VF4E-110	VCJ 5/8	VF4E-226	RCJ 1-5/8	VF4S-210	YCJ 5/8
VF2E-112	VCJT 3/4	VF2E-226	RCJT 1-5/8	VF2S-210	YCJT 5/8	VF4E-112	VCJ 3/4	VF4E-227	RCJ 1-11/16	VF4S-212	YCJ 3/4
VF2E-114	VCJT 7/8	VF2E-227	RCJT 1-11/16	VF2S-212	YCJT 3/4	VF4E-114	VCJ 7/8	VF4E-228	RCJ 1-3/4	VF4S-214	YCJ 7/8
VF2E-115	VCJT 15/16	VF2E-228	RCJT 1-3/4	VF2S-214	YCJT 7/8	VF4E-115	VCJ 15/16	<b>VF4E-231</b>	<b>RCJ 1-15/16</b>	VF4S-215	YCJ 15/16
<b>VF2E-116</b>	<b>VCJT 1</b>	<b>VF2E-231</b>	<b>RCJT 1-15/16</b>	VF2S-215	YCJT 15/16	<b>VF4E-116</b>	<b>VCJ 1</b>	VF4E-232	RCJ 2	<b>VF4S-216</b>	<b>YCJ 1</b>
VF2E-118	VCJT 1-1/8	VF2E-232	RCJT 2	<b>VF2S-216</b>	<b>YCJT 1</b>	VF4E-118	VCJ 1-1/8	VF4E-235	RCJ 2-3/16	VF4S-218	YCJ 1-1/8
<b>VF2E-119</b>	<b>VCJT 1-3/16</b>	VF2E-235	RCJT 2-7/16	VF2S-218	YCJT 1-1/8	<b>VF4E-119</b>	<b>VCJ 1-3/16</b>	VF4E-236	RCJ 2-1/4	<b>VF4S-219</b>	<b>YCJ 1-3/16</b>
VF2E-120	VCJT 1-1/4	VF2E-236	RCJT 2-1/4	<b>VF2S-219</b>	<b>YCJT 1-3/16</b>	VF4E-120	VCJ 1-1/4	VF4E-239	RCJ 2-7/16	VF4S-220	YCJ 1-1/4
VF2E-120S	VCJT 1-1/4S	VF2E-239	RCJT 2-7/16	VF2S-220	YCJT 1-1/4	VF4E-120S	VCJ 1-1/4S	VF4E-243	RCJ 2-11/16	VF4S-220S	YCJ 1-1/4S
VF2E-122	VCJT 1-3/8	VF2E-243	RCJT 2-11/16	VF2S-220S	YCJT 1-1/4S	VF4E-122	VCJ 1-3/8	VF4E-247	RCJ 2-15/16	VF4S-222	YCJ 1-3/8
<b>VF2E-123</b>	<b>VCJT 1-7/16</b>	VF2E-247	RCJT 2-15/16	VF2S-222	YCJT 1-3/8	<b>VF4E-123</b>	<b>VCJ 1-7/16</b>	VF4S-108	SCJ 1/2	<b>VF4S-223</b>	<b>YCJ 1-7/16</b>
VF2E-124	VCJT 1-1/2	VF2S-108	SCJT 1/2	<b>VF2S-223</b>	<b>YCJT 1-7/16</b>	VF4E-124	VCJ 1-1/2	VF4S-110	SCJ 5/8	VF4S-224	YCJ 1-1/2
VF2E-127	VCJT 1-11/16	VF2S-110	SCJT 5/8	VF2S-224	YCJT 1-1/2	VF4E-127	VCJ 1-11/16	VF4S-112	SCJ 3/4	VF4S-226	YCJ 1-5/8
VF2E-128	VCJT 1-3/4	VF2S-112	SCJT 3/4	VF2S-226	YCJT 1-5/8	VF4E-128	VCJ 1-3/4	VF4S-114	SCJ 7/8	VF4S-227	YCJ 1-11/16
<b>VF2E-131</b>	<b>VCJT 1-15/16</b>	VF2S-114	SCJT 7/8	VF2S-227	YCJT 1-11/16	<b>VF4E-131</b>	<b>VCJ 1-15/16</b>	VF4S-115	SCJ 15/16	VF4S-228	YCJ 1-3/4
VF2E-132	VCJT 2	VF2S-115	SCJT 15/16	VF2S-228	YCJT 1-3/4	VF4E-132	VCJ 2	<b>VF4S-116</b>	<b>SCJ 1</b>	<b>VF4S-231</b>	<b>YCJ 1-15/16</b>
VF2E-132S	VCJT 2S	<b>VF2S-116</b>	<b>SCJT 1</b>	<b>VF2S-231</b>	<b>YCJT 1-15/16</b>	VF4E-132S	VCJ 2S	VF4S-118	SCJ 1-1/8	VF4S-232	YCJ 2
VF2E-135	VCJT 2-3/16	VF2S-118	SCJT 1-1/8	VF2S-232	YCJT 2	VF4E-208	RCJ 1/2	VF4S-119	SCJ 1-5/16	VF4S-232S	YCJ 2S
VF2E-208	RCJT 1/2	<b>VF2S-119</b>	<b>SCJT 1-3/16</b>	VF2S-232S	YCJT 2S	VF4E-210	RCJ 5/8	VF4S-120	SCJ 1-1/4	VF4S-235	YCJ 2-3/16
VF2E-210	RCJT 5/8	VF2S-120	SCJT 1-1/4	VF2S-235	YCJT 2-3/16	VF4E-212	RCJ 3/4	VF4S-120S	SCJ 1-1/4S	VF4S-236	YCJ 2-1/4
VF2E-212	RCJT 3/4	VF2S-120S	SCJT 1-1/4S	VF2S-236	YCJT 2-1/4	VF4E-214	RCJ 7/8	VF4S-122	SCJ 1-3/8	VF4S-239	YCJ 2-7/16
VF2E-214	RCJT 7/8	VF2S-122	SCJT 1-3/8	VF2S-239	YCJT 2-7/16	VF4E-215	RCJ 15/16	<b>VF4S-123</b>	<b>SCJ 1-7/16</b>	VF4S-243	YCJ 2-11/16
VF2E-215	RCJT 15/16	<b>VF2S-123</b>	<b>SCJT 1-7/16</b>	VF2S-243	YCJT 2-11/16	<b>VF4E-216</b>	<b>RCJ 1</b>	VF4S-124	SCJ 1-1/2	VF4S-247	YCJ 2-15/16
<b>VF2E-216</b>	<b>RCJT 1</b>	VF2S-124	SCJT 1-1/2	VF2S-247	YCJT 2-15/16	VF4E-218	RCJ 1-1/8	VF4S-127	SCJ 1-11/16		
VF2E-218	RCJT 1-1/8	VF2S-127	SCJT 1-11/16			<b>VF4E-219</b>	<b>RCJ 1-3/16</b>	VF4S-128	SCJ 1-3/4		
<b>VF2E-219</b>	<b>RCJT 1-3/16</b>	VF2S-128	SCJT 1-3/4			VF4E-220	RCJ 1-1/4	<b>VF4S-131</b>	<b>SCJ 1-15/16</b>		
VF2E-220	RCJT 1-1/4	<b>VF2S-131</b>	<b>SCJT 1-15/16</b>			VF4E-2205	RCJ 1-1/4	VF4S-132	SCJ 2		
VF2E-220S	RCJT 1-1/4S	VF2S-132	SCJT 2			VF4E-222	RCJ 1-3/8	VF4S-132S	SCJ 2S		
VF2E-222	RCJT 1-3/8	VF2S-132S	SCJT 2S			<b>VF4E-223</b>	<b>RCJ 1-7/16</b>	VF4S-135	SCJ 2-3/16		

NOTE: Timken has made every effort to ensure the accuracy of this interchange, however, Timken is not liable for any errors or omissions. Dimension for length along the shaft varies from manufacturer to manufacturer with regard to flange units.



## Sealmaster Timken Interchange

### Timken® Fafnir® Ball Bearing Pillow Blocks

# TIMKEN

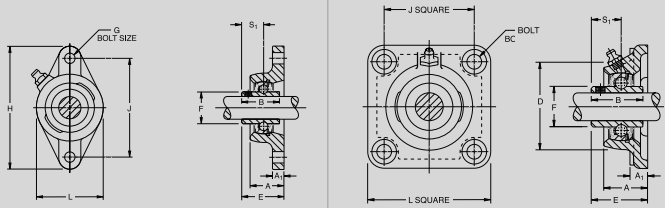
Where You Turn

PILLOW BLOCK	TIMKEN FAFNIR	SEALMASTER	PILLOW BLOCK	TIMKEN FAFNIR	SEALMASTER	PILLOW BLOCK	TIMKEN FAFNIR	SEALMASTER	PILLOW BLOCK	TIMKEN FAFNIR	SEALMASTER
Premium Eccentric Lock	RAK 1		Standard Eccentric Lock	VAK 1		Premium Set Screw	YAK 1	NPL-16	Standard Set Screw	SAK 1	
	RAS 1			VAS 1			YAS 1	NP-16		SAS 1	

### PILLOW BLOCKS

SEALMASTER PN	TIMKEN-FAFNIR PN	SEALMASTER PN	TIMKEN-FAFNIR PN	SEALMASTER PN	TIMKEN-FAFNIR PN	SEALMASTER PN	TIMKEN-FAFNIR PN	SEALMASTER PN	TIMKEN-FAFNIR PN	SEALMASTER PN	TIMKEN-FAFNIR PN
NP-8	YAS 1/2	NP-18	YAS 1-1/8	NP-28	YAS 1-3/4	NPL-8	YAK 1/2	NPL-18	YAK 1-1/8	NPL-28	YAK 1-3/4
NP-9	YAS 9/16	<b>NP-19</b>	<b>YAS 1-3/16</b>	NP-29	YAS 1-13/16	NPL-9	YAK 9/16	<b>NPL-19</b>	<b>YAK 1-3/16</b>	NPL-29	YAK 1-13/16
NP-10	YAS 5/8	NP-20	YAS 1-1/4	NP-30	YAS 1-7/8	NPL-10	YAK 5/8	NPL-20	YAK 1-1/4	NPL-30	YAK 1-7/8
NP-11	YAS 11/16	NP-21	YAS 1-5/16	<b>NP-31</b>	<b>YAS 1-15/16</b>	NPL-11	YAK 11/16	NPL-21	YAK 1-5/16	<b>NPL-31</b>	<b>YAK 1-15/16</b>
NP-12	YAS 3/4	NP-22	YAS 1-3/8	NP-32	YAS 2	NPL-12	YAK 3/4	NPL-22	YAK 1-3/8	NPL-32	YAK 2
NP-13	YAS 13/16	<b>NP-23</b>	<b>YAS 1-7/16</b>	NP-34	YAS 2-1/8	NPL-13	YAK 13/16	<b>NPL-23</b>	<b>YAK 1-7/16</b>	NPL-34	YAK 2-1/8
NP-14	YAS 7/8	NP-24	YAS 1-1/2	NP-35	YAS 2-3/16	NPL-14	YAK 7/8	NPL-24	YAK 1-1/2	NPL-35	YAK 2-3/16
NP-15	YAS 15/16	NP-25	YAS 1-9/16	NP-36	YAS 2-1/4	NPL-15	YAK 15/16	NPL-25	YAK 1-9/16	NPL-36	YAK 2-1/4
<b>NP-16</b>	<b>YAS 1</b>	NP-26	YAS 1-5/8	NP-38	YAS 2-3/8	<b>NPL-16</b>	<b>YAK 1</b>	NPL-26	YAK 1-5/8	NPL-38	YAK 2-3/8
NP-17	YAS 1-1/16	NP-27	YAS 1-11/16	NP-39	YAS 2-7/16	NPL-17	YAK 1-1/16	NPL-27	YAK 1-11/16	NPL-39	YAK 2-7/16

NOTE: Timken has made every effort to ensure the accuracy of this interchange, however, Timken is not liable for any errors or omissions. Dimension for length along the shaft varies from manufacturer to manufacturer with regard to flange units.



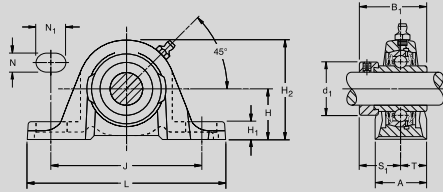
**Sealmaster Timken Interchange**  
Timken® Fafnir® Ball Bearing 2-Bolt/4-Bolt Flange Units



2-BOLT / 4-BOLT	TIMKEN FAFNIR	SEALMASTER	2-BOLT / 4-BOLT	TIMKEN FAFNIR	SEALMASTER	2-BOLT / 4-BOLT	TIMKEN FAFNIR	SEALMASTER	2-BOLT / 4-BOLT	TIMKEN FAFNIR	SEALMASTER
Premium Eccentric Lock	RCJT 1		Standard Eccentric Lock	VCJT 1		Premium Set Screw	YCJT 1	SFT-16	Standard Set Screw	SCJT 1	
	RCJ 1			VCJ 1			YCJ 1	SF-16		SCJ 1	

2-BOLT FLANGE UNITS						4-BOLT FLANGE UNITS					
SEALMASTER PN	TIMKEN-FAFNIR PN	SEALMASTER PN	TIMKEN-FAFNIR PN	SEALMASTER PN	TIMKEN-FAFNIR PN	SEALMASTER PN	TIMKEN-FAFNIR PN	SEALMASTER PN	TIMKEN-FAFNIR PN	SEALMASTER PN	TIMKEN-FAFNIR PN
SFT-10	YCJT 5/8	<b>SFT-19</b>	<b>YCJT 1-3/16</b>	SFT-27	YCJT 1-11/16	SF-10	YCJ 5/8	SF-21	YCJ 1-5/16	SF-32R	YCJ 2S
SFT-11	YCJT 11/16	SFT-20	YCJT 1-1/4	SFT-28	YCJT 1-3/4	SF-11	YCJ 11/16	SF-22	YCJ 1-3/8	SF-34	YCJ 2-1/8
SFT-12	YCJT 3/4	SFT-20R	YCJT 1-1/4S	SFT-29	YCJT 1-13/16	SF-12	YCJ 3/4	<b>SF-23</b>	<b>YCJ 1-7/16</b>	SF-35	YCJ 2-3/16
SFT-13	YCJT 13/16	SFT-21	YCJT 1-5/16	SFT-30	YCJT 1-7/8	SF-13	YCJ 13/16	SF-24	YCJ 1-1/2	SF-36	YCJ 2-1/4
SFT-14	YCJT 7/8	SFT-22	YCJT 1-3/8	<b>SFT-31</b>	<b>YCJT 1-15/16</b>	SF-14	YCJ 7/8	SF-25	YCJ 1-9/16	SF-38	YCJ 2-3/8
SFT-15	YCJT 15/16	<b>SFT-23</b>	<b>YCJT 1-7/16</b>	SFT-32	YCJT 2	SF-15	YCJ 15/16	SF-26	YCJ 1-5/8	SF-39	YCJ 2-7/16
<b>SFT-16</b>	<b>YCJT 1</b>	SFT-24	YCJT 1-1/2	SFT-32R	YCJT 2S	<b>SF-16</b>	<b>YCJ 1</b>	SF-27	YCJ 1-11/16	SF-40	YCJ 2-1/2
SFT-17	YCJT 1-1/16	SFT-25	YCJT 1-9/16	SFT-34	YCJT 2-1/8	SF-17	YCJ 1-1/16	SF-28	YCJ 1-3/4	SF-43	YCJ 2-11/16
SFT-18	YCJT 1-1/8	SFT-26	YCJT 1-5/8	SFT-35	YCJT 2-3/16	SF-18	YCJ 1-1/8	SF-29	YCJ 1-13/16	SF-46	YCJ 2-7/8
				SFT-8	YCJT 1/2	<b>SF-19</b>	<b>YCJ 1-3/16</b>	SF-30	YCJ 1-7/8	SF-47	YCJ 2-15/16
				SFT-9	YCJT 9/16	SF-20	YCJ 1-1/4	<b>SF-31</b>	<b>YCJ 1-15/16</b>	SF-8	YCJ 1/2
						SF-20R	YCJ 1-1/4S	SF-32	YCJ 2	SF-9	YCJ 9/16

NOTE: Timken has made every effort to ensure the accuracy of this interchange, however, Timken is not liable for any errors or omissions. Dimension for length along the shaft varies from manufacturer to manufacturer with regard to flange units.



## Linkbelt Timken Interchange

Timken® Fafnir® Ball Bearing Pillow Blocks

# TIMKEN

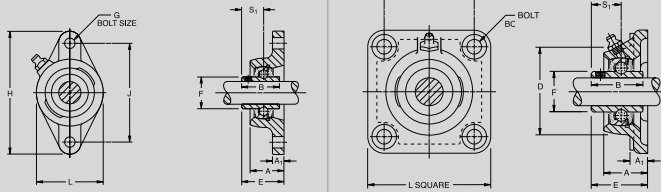
Where You Turn

PILLOW BLOCK	TIMKEN FAFNIR	LINKBELT	PILLOW BLOCK	TIMKEN FAFNIR	LINKBELT	PILLOW BLOCK	TIMKEN FAFNIR	LINKBELT	PILLOW BLOCK	TIMKEN FAFNIR	LINKBELT
Premium Eccentric Lock	RAK 1	PL3-Y216N	Standard Eccentric Lock	VAK 1		Premium Set Screw	YAK 1	PL3-U216N	Standard Set Screw	SAK 1	PL3-S216E
	RAS 1	P3-Y216N		VAS 1			YAS 1	P3-U216N		SAS 1	P3-S216E

### PILLOW BLOCKS

LINKBELT PN	TIMKEN-FAFNIR PN	LINKBELT PN	TIMKEN-FAFNIR PN	LINKBELT PN	TIMKEN-FAFNIR PN	LINKBELT PN	TIMKEN-FAFNIR PN	LINKBELT PN	TIMKEN-FAFNIR PN	LINKBELT PN	TIMKEN-FAFNIR PN
P3-S212E	SAS 3/4	<b>P3-U216N</b>	<b>YAS 1</b>	P3-U247N	YAS 2-15/16	P3-Y232N	RAS 2	PL3-U211N	YAK 11/16	PL3-Y211 N	RAK 11/16
P3-S214E	SAS 7/8	P3-U218N	YAS 1-1/8	P3-U255N	YAS 3-7/16	P3-Y235N	RAS 2-3/16	PL3-U212N	YAK 3/4	PL3-Y212N	RAK 3/4
P3-S215E	SAS 15/16	<b>P3-U219N</b>	<b>YAS 1-3/16</b>	P3-U263N	YAS 3-15/16	P3-Y236N	RAS 2-1/4	PL3-U214N	YAK 7/8	PL3-Y214N	RAK 7/8
<b>P3-S216E</b>	<b>SAS 1</b>	P3-U220N	YAS 1-1/4	P3-Y210N	RAS 5/8	P3-Y238N	RAS 2-3/8	PL3-U215N	YAK 15/16	PL3-Y215N	RAK 15/16
P3-S218E	SAS 1-1/8	P3-U222N	YAS 1-3/8	P3-Y211 N	RAS 11/16	P3-Y239N	RAS 2-7/16	<b>PL3-U216N</b>	<b>YAK 1</b>	<b>PL3-Y216N</b>	<b>RAK 1</b>
<b>P3-S219E</b>	<b>SAS 1-3/16</b>	<b>P3-U223N</b>	<b>YAS 1-7/16</b>	P3-Y212N	RAS 3/4	PL3-S212E	SAK 3/4	PL3-U218N	YAK 1-1/8	PL3-Y218N	RAK 1-1/8
P3-S220E	SAS 1-1/4	P3-U224N	YAS 1-1/2	P3-Y214N	RAS 7/8	PL3-S215E	SAK 15/16	<b>PL3-U219N</b>	<b>YAK 1-3/16</b>	<b>PL3-Y219N</b>	<b>RAK 1-3/16</b>
P3-S222E	SAS 1-3/8	P3-U226N	YAS 1-5/8	P3-Y215N	RAS 15/16	<b>PL3-S216E</b>	<b>SAK 1</b>	PL3-U220N	YAK 1-1/4	PL3-Y220N	RAK 1-1/4
<b>P3-S223E</b>	<b>SAS 1-7/16</b>	P3-U227N	YAS 1-11/16	<b>P3-Y216N</b>	<b>RAS 1</b>	PL3-S218E	SAK 1-1/8	PL3-U222N	YAK 1-3/8	PL3-Y222N	RAK 1-3/8
P3-S224E	SAS 1-1/2	P3-U228N	YAS 1-3/4	P3-Y218N	RAS 1-1/8	<b>PL3-S219E</b>	<b>SAK 1-3/16</b>	<b>PL3-U223N</b>	<b>YAK 1-7/16</b>	<b>PL3-Y223N</b>	<b>RAK 1-7/16</b>
P3-S226E	SAS 1-5/8	<b>P3-U231N</b>	<b>YAS 1-15/16</b>	<b>P3-Y219N</b>	<b>RAS 1-3/16</b>	PL3-S220E	SAK 1-1/4	PL3-U224N	YAK 1-1/2	PL3-Y224N	RAK 1-1/2
P3-S227E	SAS 1-11/16	P3-U232N	YAS 2	P3-Y220N	RAS 1-1/4	PL3-S222E	SAK 1-3/8	PL3-U226N	YAK 1-5/8	PL3-Y226N	RAK 1-5/8
P3-S228E	SAS 1-3/4	P3-U235N	YAS 2-3/16	P3-Y222N	RAS 1-3/8	<b>PL3-S223E</b>	<b>SAK 1-7/16</b>	PL3-U227N	YAK 1-11/16	PL3-Y227N	RAK 1-11/16
<b>P3-S231E</b>	<b>SAS 1-15/16</b>	P3-U236N	YAS 2-1/4	<b>P3-Y223N</b>	<b>RAS 1-7/16</b>	PL3-S224E	SAK 1-1/2	PL3-U228N	YAK 1-3/4	PL3-Y228N	RAK 1-3/4
P3-U210N	YAS 5/8	P3-U238N	YAS 2-3/8	P3-Y224N	RAS 1-1/2	PL3-S226E	SAK 1-5/8	PL3-U232N	YAK 2	<b>PL3-Y231N</b>	<b>RAK 1-15/16</b>
P3-U211N	YAS 11/16	P3-U239N	YAS 2-7/16	P3-Y226N	RAS 1-5/8	PL3-S227E	SAK 1-11/16	PL3-U236N	YAK 2-1/4	PL3-Y232N	RAK 2
P3-U212N	YAS 3/4	P3-U240N	YAS 2-1/2	P3-Y227N	RAS 1-11/16	PL3-S228E	SAK 1-3/4	PL3-U238N	YAK 2-3/8	PL3-Y235N	RAK 2-3/16
P3-U214N	YAS 7/8	P3-U243N	YAS 2-11/16	P3-Y228N	RAS 1-3/4	<b>PL3-S231 E</b>	<b>SAK 1-15/16</b>	PL3-U239N	YAK 2-7/16	PL3-Y236N	RAK 2-1/4
P3-U215N	YAS 15/16	P3-U244N	YAS 2-3/4	<b>P3-Y231N</b>	<b>RAS 1-15/16</b>	PL3-U210N	YAK 5/8	PL3-Y210N	RAK 5/8	PL3-Y238N	RAK 2-3/8
										PL3-Y239N	RAK 2-7/16

NOTE: Timken has made every effort to ensure the accuracy of this interchange, however, Timken is not liable for any errors or omissions. Dimension for length along the shaft varies from manufacturer to manufacturer with regard to flange units.



## Linkbelt Timken Interchange

Timken® Fafnir® Ball Bearing 2-Bolt/4-Bolt Flange Units

# TIMKEN

Where You Turn

2-BOLT / 4-BOLT	TIMKEN FAFNIR	LINKBELT	2-BOLT / 4-BOLT	TIMKEN FAFNIR	LINKBELT	2-BOLT / 4-BOLT	TIMKEN FAFNIR	LINKBELT	2-BOLT / 4-BOLT	TIMKEN FAFNIR	LINKBELT
Premium Eccentric Lock	RCJT 1	FX3-Y216N	Standard Eccentric Lock	VCJT 1		Premium Set Screw	YCJT 1	FX3-U216N	Standard Set Screw	SCJT 1	FX3-S216E
	RCJ 1	F3-Y216N		VCJ 1			YCJ 1	F3-U216N		SCJ 1	F3-S216E

2-BOLT FLANGE UNITS						4-BOLT FLANGE UNITS					
LINKBELT PN	TIMKEN-FAFNIR PN	LINKBELT PN	TIMKEN-FAFNIR PN	LINKBELT PN	TIMKEN-FAFNIR PN	LINKBELT PN	TIMKEN-FAFNIR PN	LINKBELT PN	TIMKEN-FAFNIR PN	LINKBELT PN	TIMKEN-FAFNIR PN
FX3-S212E	SCJT 3/4	FX3-U212N	YCJT 3/4	FX3-Y212N	RCJT 3/4	F3-S212E	SCJ 3/4	<b>F3-U216N</b>	<b>YCJ 1</b>	F3-U255N	YCJ 3-7/16
FX3-S214E	SCJT 7/8	FX3-U214N	YCJT 7/8	FX3-Y214N	RCJT 7/8	F3-S214E	SCJ 7/8	F3-U218N	YCJ 1-1/8	F3-Y212N	RCJ 3/4
FX3-S215E	SCJT 15/16	FX3-U215N	YCJT 15/16	FX3-Y215N	RCJT 15/16	F3-S215E	SCJ 15/16	<b>F3-U219N</b>	<b>YCJ 1-3/16</b>	F3-Y214N	RCJ 7/8
<b>FX3-S216E</b>	<b>SCJT 1</b>	<b>FX3-U216N</b>	<b>YCJT 1</b>	<b>FX3-Y216N</b>	<b>RCJT 1</b>	<b>F3-S216E</b>	<b>SCJ 1</b>	F3-U220N	YCJ 1-1/4	F3-Y215N	RCJ 15/16
FX3-S218E	SCJT 1-1/8	FX3-U218N	YCJT 1-1/8	FX3-Y218N	RCJT 1-1/8	F3-S218E	SCJ 1-1/8	F3-U222N	YCJ 1-3/8	<b>F3-Y216N</b>	<b>RCJ 1</b>
<b>FX3-S219E</b>	<b>SCJT 1-3/16</b>	<b>FX3-U219N</b>	<b>YCJT 1-3/16</b>	<b>FX3-Y219N</b>	<b>RCJT 1-3/16</b>	<b>F3-S219E</b>	<b>SCJ 1-3/16</b>	<b>F3-U223N</b>	<b>YCJ 1-7/16</b>	F3-Y218N	RCJ 1-1/8
FX3-S220E	SCJT 1-1/4	FX3-U220N	YCJT 1-1/4	FX3-Y220N	RCJT 1-1/4	F3-S220E	SCJ 1-1/4	F3-U224N	YCJ 1-1/2	<b>F3-Y219N</b>	<b>RCJ 1-3/16</b>
FX3-S222E	SCJT 1-3/8	FX3-U222N	YCJT 1-3/8	FX3-Y222N	RCJT 1-3/8	F3-S222E	SCJ 1-3/8	F3-U226N	YCJ 1-5/8	F3-Y220N	RCJ 1-1/4
<b>FX3-S223E</b>	<b>SCJT 1-7/16</b>	<b>FX3-U223N</b>	<b>YCJT 1-7/16</b>	<b>FX3-Y223N</b>	<b>RCJT 1-7/16</b>	<b>F3-S223E</b>	<b>SCJ 1-7/16</b>	F3-U227N	YCJ 1-11/16	F3-Y222N	RCJ 1-3/8
FX3-S224E	SCJT 1-1/2	FX3-U224N	YCJT 1-1/2	FX3-Y224N	RCJT 1-1/2	F3-S224E	SCJ 1-1/2	F3-U228N	YCJ 1-3/4	<b>F3-Y223N</b>	<b>RCJ 1-7/16</b>
FX3-S226E	SCJT 1-5/8	FX3-U226N	YCJT 1-5/8	FX3-Y226N	RCJT 1-5/8	F3-S226E	SCJ 1-5/8	<b>F3-U231N</b>	<b>YCJ 1-15/16</b>	F3-Y224N	RCJ 1-1/2
FX3-S227E	SCJT 1-11/16	FX3-U227N	YCJT 1-11/16	FX3-Y227N	RCJT 1-11/16	F3-S227E	SCJ 1-11/16	F3-U232N	YCJ 2	F3-Y226N	RCJ 1-5/8
FX3-S228E	SCJT 1-3/4	FX3-U228N	YCJT 1-3/4	FX3-Y228N	RCJT 1-3/4	F3-S228E	SCJ 1-3/4	F3-U235N	YCJ 2-3/16	F3-Y227N	RCJ 1-11/16
<b>FX3-S231E</b>	<b>SCJT 1-15/16</b>	FX3-U235N	YCJT 2-3/16	<b>FX3-Y231N</b>	<b>RCJT 1-15/16</b>	<b>F3-S231E</b>	<b>SCJ 1-15/16</b>	F3-U236N	YCJ 2-1/4	F3-Y228N	RCJ 1-3/4
FX3-U210N	YCJT 5/8	FX3-Y210N	RCJT 5/8	FX3-Y232N	RCJT 2	F3-U210N	YCJ 5/8	F3-U238N	YCJ 2-3/8	<b>F3-Y231N</b>	<b>RCJ 1-15/16</b>
FX3-U211N	YCJT 11/16	FX3-Y211N	RCJT 11/16	FX3-Y235N	RCJT 2-3/16	F3-U211 N	YCJ 11/16	F3-U239N	YCJ 2-7/16	F3-Y232N	RCJ 2
						F3-U212N	YCJ 3/4	F3-U243N	YCJ 2-11/16	F3-Y235N	RCJ 2-3/16
						F3-U214N	YCJ 7/8	F3-U244N	YCJ 2-3/4	F3-Y236N	RCJ 2-1/4
						F3-U215N	YCJ 15/16	F3-U247N	YCJ 2-15/16	F3-Y238N	RCJ 2-3/8
										F3-Y239N	RCJ 2-7/16

NOTE: Timken has made every effort to ensure the accuracy of this interchange, however, Timken is not liable for any errors or omissions. Dimension for length along the shaft varies from manufacturer to manufacturer with regard to flange units.