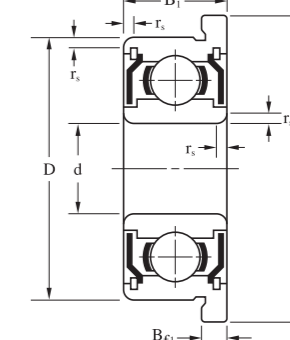
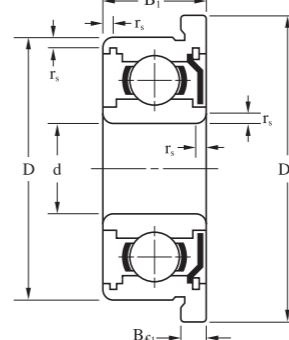
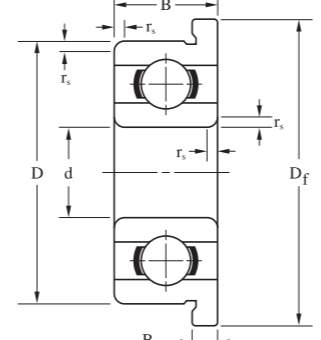
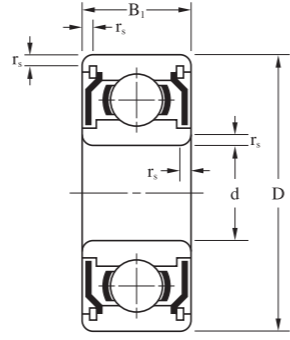
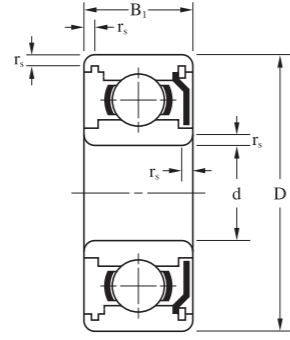
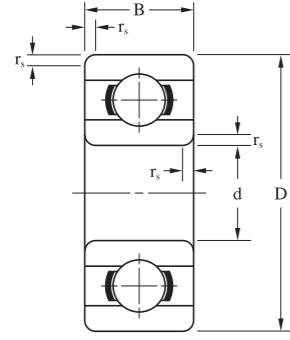


Bore Diameter: d		Outer Diameter: D		Flange Diameter: Df		Radius: r_s(min)		Open Bearings				Seal, Shield Bearings						
mm	inch	mm	inch	mm	inch	mm	inch	Width: B		Flange Width: Bf		Bearing Reference				Seal		
								mm	inch	mm	inch	Open	Flange Open	Shield	Flange Shield	2RS	2RU	TTS
0.6	0.0236	2.5	0.0984	-	-	0.05	0.0020	1.0	0.0394	-	-	68/0.6	-	-	-	-	-	-
1.0	0.0394	3	0.1181	3.8	0.1496	0.05	0.0020	1.0	0.0394	0.3	0.0118	681	F681	-	-	-	-	-
		3	0.1181	-	-	0.05	0.0020	1.5	0.0591	-	-	MR31	-	-	-	-	-	-
		4	0.1575	5.0	0.1969	0.10	0.0039	1.6	0.0630	0.5	0.0197	691	F691	-	-	-	-	-
1.2	0.0472	4	0.1575	4.8	0.1890	0.10	0.0039	1.8	0.0709	0.4	0.0157	MR41X	MF41X	MR41XZZ	-	-	-	-
1.5	0.0591	4	0.1575	5.0	0.1969	0.05	0.0020	1.2	0.0472	0.4	0.0157	681X	F681X	681XZZ	F681XZZ	-	-	-
		5	0.1969	6.5	0.2559	0.15	0.0059	2.0	0.0787	0.6	0.0236	691X	F691X	691XZZ	F691XZZ	-	-	-
		6	0.2362	7.5	0.2953	0.15	0.0059	2.5	0.0984	0.6	0.0236	601X	F601X	601XZZ	F601XZZ	-	-	-
2.0	0.0787	4	0.1575	-	-	0.05	0.0020	1.2	0.0472	-	-	672	-	672ZZ	-	-	-	-
		5	0.1969	6.1	0.2402	0.08	0.0031	1.5	0.0591	0.5	0.0197	682	F682	682ZZ	F682ZZ	-	-	-
		5	0.1969	6.2	0.2441	0.10	0.0039	2.0	0.0787	0.6	0.0236	MR52	MF52	MR52ZZ	MF52ZZ	-	-	-
		6	0.2362	7.5	0.2953	0.15	0.0059	2.3	0.0906	0.6	0.0236	692	F692	692ZZ	F692ZZ	-	-	TTS
		6	0.2362	7.2	0.2853	0.15	0.0059	2.5	0.0984	0.6	0.0236	MR62	MF62	MR62ZZ	-	-	-	-
		7	0.2756	8.2	0.3228	0.15	0.0059	2.5	0.0984	0.6	0.0236	MR72	MF72	MR72ZZS	MF72ZZS	-	-	TTS
		7	0.2756	8.5	0.3346	0.15	0.0059	2.8	0.1102	0.7	0.0276	602	F602	602ZZS	F602ZZS	-	-	TTS
2.5	0.0984	6	0.2362	7.1	0.2795	0.08	0.0031	1.8	0.0709	0.5	0.0197	682X	F682X	682XZZ	F682XZZ	-	-	-
		7	0.2756	8.5	0.3346	0.15	0.0059	2.5	0.0984	0.7	0.0276	692X	F692X	692XZZS	F692XZZS	-	-	TTS
		8	0.3150	9.2	0.3622	0.20	0.0079	2.5	0.0984	0.6	0.0236	MR82X	MF82X	-	-	-	-	-
		8	0.3150	9.5	0.3740	0.15	0.0059	2.8	0.1102	0.7	0.0276	602X	F602X	602XZZ	F602X	-	-	-
3.0	0.1181	6	0.2362	7.2	0.2835	0.10	0.0039	2.0	0.0787	0.6	0.0236	MR63	MF63	MR63ZZ	MF63ZZ	-	-	-
		7	0.2756	8.1	0.3189	0.10	0.0039	2.0	0.0787	0.5	0.0197	683	F683	683ZZ	F683ZZ	-	-	TTS <sup>4)</sup>
		8	0.3150	9.2	0.3622	0.15	0.0059	2.5	0.0984	0.6	0.0236	MR83	MF83	MR83ZZ	-	-	-	-
		8	0.3150	9.5	0.3740	0.15	0.0059	3.0	0.1181	0.7	0.0276	693	F693	693ZZ	F693ZZ	2RS	-	-
		9	0.3543	10.2	0.4016	0.20	0.0079	2.5	0.0984	0.6	0.0236	MR93	MF93	MR93ZZ	MF93ZZ	-	-	-
		9	0.3543	10.5	0.4134	0.15	0.0059	3.0	0.1181	0.7	0.0276	603	F603	603ZZ	F603ZZ	-	-	-
		10	0.3937	11.5	0.4528	0.15	0.0059	4.0	0.1575	1.0	0.0394	623	F623	623ZZ	F623ZZ	2RS	2RU	-
		13	0.5118	-	-	0.20	0.0079	5.0	0.1969	-	-	633	-	633ZZ	-	2RS	2RU	-
4.0	0.1575	7	0.2756	8.2	0.3228	0.10	0.0039	2.0	0.0787	0.6	0.0236	MR74	MF74	-	-	-	-	-
		7	0.2756	8.2	0.3228	0.10	0.0039	-	-	-	-	-	-	MR74ZZ	MF74ZZ	-	-	-
						0.15	0.0059											
		8	0.3150	9.2	0.3622	0.10	0.0039	2.0	0.0787	0.6	0.0236	MR84	MF84	MR84ZZ	MF84ZZ	-	-	-
		9	0.3543	10.3	0.4055	0.10	0.0039	2.5	0.0984	0.6	0.0236	684	F684	684ZZ	F684ZZ	2RS	2RU	TTS
						0.20	0.0079											
		10	0.3937	11.2	0.4409	0.15	0.0059	3.0	0.1181	0.6	0.0236	MR104	MF104	MR104ZZ	MF104ZZ	2RS	2RU	-
		11	0.4331	12.5	0.4921	0.15	0.0059	4.0	0.1575	1.0	0.0394	694	F694	694ZZ	F694ZZ	2RS	2RU	-
		12	0.4724	13.5	0.5315	0.20	0.0079	4.0	0.1575	1.0	0.0394	604	F604	604ZZ	F604ZZ	2RS	2RU	-
		13	0.5118	15.0	0.5906	0.20	0.0079	5.0	0.1969	1.0	0.0394	624	F624	624ZZ	F624ZZ	2RS	2RU	-
		16	0.6299	18.0	0.7087	0.30	0.0118	5.0	0.1969	1.0	0.0394	634	F634	634ZZ	F634ZZ	2RS	2RU	TTS

Width: B1		Flange Width: Bf1		Load Rating		Max. Speed		Cage Type	Ball Complement			Weight (Reference)			
mm	inch	mm	inch	Cr(N)	Cor(N)	Grease	Oil		Qty.:Z	Size:Dw		Open	Flange Open	Shield	Flange Shield
						x1000rpm				pcs.	mm				
-	-	-	-	68	16	142	160	W	5	0.500	0.0197	0.02	-	-	-
-	-	-	-	96	26	130	150	W	6	0.600	0.0236	0.03	0.04	-	-
-	-	-	-	96	26	130	150	W	6	0.600	0.0236	0.05	-	-	-
-	-	-	-	141	37	100	120	W	5	0.800	0.0315	0.11	0.14	-	-
2.5	0.0984	-	-	112	33	110	130	W	7	0.600	0.0236	0.10	0.12	0.14	-
2.0	0.0787	0.6	0.0236	112	33	100	120	W	7	0.600	0.0236	0.10	0.12	0.14	0.17
2.6	0.1024	0.8	0.0315	169	50	85	100	W	6	1.000	0.0394	0.20	0.26	0.25	0.33
3.0	0.1181	0.8	0.0315	330	99	75	90	W	6	1.200	0.0472	0.31	0.38	0.40	0.50
2.0	0.0787	-	-	124	40	91	104	W	8	0.600	0.0236	0.05	-	0.07	-
2.3	0.0906	0.6	0.0236	169	50	85	100	W	6	0.800	0.0315	0.15	0.19	0.20	0.24
2.5	0.0984	0.6	0.0236	169	50	85	100	W	6	0.800	0.0315	0.14	0.19	0.20	0.25
3.0	0.1181	0.8	0.0315	330	99	75	90	W,J,TW	6	1.200	0.0472	0.28	0.35	0.35	0.45
2.5	0.0984	-	-	330	99	75	90	W,J	6	1.200	0.0472	0.28	0.34	0.33	-
3.0	0.1181	0.6	0.0236	386	129	63	75	W	7	1.200	0.0472	0.43	0.50	0.53	0.60
3.5	0.1378	0.9	0.0354	386	129	60	71	W	7	1.200	0.0472	0.50	0.60	0.60	0.73
2.6	0.1024	0.8	0.0315	209	74	71	80	W	8	0.800	0.0315	0.20	0.24	0.35	0.42
3.5	0.1378	0.9	0.0354	386	129	63	75	W	7	1.200	0.0472	0.40	0.50	0.55	0.68
-	-	-	-	558	180	60	67	W	6	1.588	0.0625	0.52	0.60	-	-
4.0	0.1575	0.9	0.0354	552	177	60	71	W	6	1.588	0.0625	0.61	0.72	0.85	0.99
2.5	0.0984	0.6	0.0236	209	74	71	80	W	8	0.800	0.0315	0.20	0.26	0.28	0.34
3.0	0.1181	0.8	0.0315	311	112	63	75	W	8	1.000	0.0394	0.32	0.37	0.45	0.53
3.0	0.1181	-	-	395	141	60	67	J	7	1.200	0.0472	0.51	0.59	0.67	-
4.0	0.1575	0.9	0.0354	558	180	60	67	W,J,TW	6	1.588	0.0625	0.60	0.71	0.80	0.94
4.0	0.1575	0.8	0.0315	571	189	56	67	W	6	1.588	0.0625	0.75	0.83	1.15	1.30
5.0	0.1969	1.0	0.0394	571	189	56	67	W	6	1.588	0.0625	0.84	0.96	1.13	1.61
4.0	0.1575	1.0	0.0394	631	219	50	60	J,TW	7	1.588	0.0625	1.45	1.65	1.65	1.85
5.0	0.1969	-	-	1301	488	40	48	J	7	2.381	0.0937	3.27	-	3.43	-
-	-	-	-	311	115	60	67	W	8	1.000	0.0394	0.23	0.30	-	-
2.5	0.0984	0.6	0.0236	255	108	60	67	W	11	0.800	0.0315	-	-	0.33	0.40
3.0	0.1181	0.6	0.0236	395	141	56	67	W,J,TW	7	1.200	0.0472	0.39	0.47	0.56	0.64
4.0	0.1575	1.0	0.0394	641	227	53	63	W,J,TW	7	1.588	0.0625	0.65	0.74	1.00	1.15
4.0	0.1575	0.8	0.0315	711	272	48	56	J	8	1.588	0.0625	0.96	1.04	1.33	1.50
4.0	0.1575	1.0	0.0394	957	350	48	56	J	7	2.000	0.0787	1.69	1.91	1.75	1.97
4.0	0.1575	1.0	0.0394	957	350	48	56	J	7	2.000	0.0787	2.19	2.42	2.34	2.57
5.0	0.1969	1.0	0.0394	1301	488	40	48	J	7	2.381	0.0937	3.10	3.44	3.20	3.54
5.0	0.1969	1.0	0.0394	1340	523	36	43	J	7	2.381	0.0937	5.24	5.66	5.44	5.86

1) \*This dimension is increased by 0.4mm for shielded or seal version.  
 2) Bearings also available with single shield or seal : suffix Z, RS, RU or TS  
 3) Bearings also available with stainless material : suffix S or H

4) TTS<sup>4)</sup> is used smaller ball, load rating is lower than standard.



Bore Diameter: d	Outer Diameter: D	Flange Diameter: Df	Radius r <sub>s</sub> (min)	Open Bearings								Seal, Shield Bearings								
				Width: B				Flange Width: Bf				Bearing Reference				Seal				
				mm	inch	mm	inch	mm	inch	mm	inch	Open	Flange Open	Shield	Flange Shield	2RS	2RU	TTS		
5.0	0.1969	8	0.3150	9.2	0.3622	0.10	0.0039	2.0	0.0787	0.6	0.0236	MR85	MF85	—	—	—	—	—	—	
												MR85ZZ	MF85ZZ	—	—	TTS				
		8	0.3150	9.2	0.3622	0.10	0.0039	—	—	—	—	—	—	—	—	—	—	—	—	
																				MR95
		9	0.3543	10.2	0.4016	0.15	0.0059	2.5	0.0984	0.6	0.0236	MR95	MF95	MR95ZS	MF95ZS	—	—	—	—	—
		10	0.3937	11.2*	0.4409	0.15	0.0059	3.0	0.1181	0.6	0.0236	MR105	MF105	MR105ZZ	MF105ZZ	2RS	2RU	—	—	—
		11	0.4331	12.6	0.4961	0.15	0.0059	—	—	—	—	—	—	—	—	—	—	—	—	
																				MR115
	11	0.4331	12.5	0.4921	0.15	0.0059	3.0	0.1181	0.8	0.0315	685	F685	685ZZ	F685ZZ	2RS	2RU	—	—	—	
																				MR115
	13	0.5118	15.0	0.5906	0.20	0.0079	4.0	0.1575	1.0	0.0394	695	F695	695ZZ	F695ZZ	2RS	2RU	TTS <sup>4)</sup>	—	—	
																				MR115
	14	0.5512	16.0	0.6299	0.20	0.0079	5.0	0.1969	1.0	0.0394	605	F605	605ZZ	F605ZZ	2RS	2RU	—	—	—	
																				MR115
	16	0.6299	18.0	0.7087	0.30	0.0118	5.0	0.1969	1.0	0.0394	625	F625	625ZZ	F625ZZ	2RS	2RU	TTS	—	—	
																				MR115
	19	0.7480	22.0	0.8661	0.30	0.0118	6.0	0.2362	1.5	0.0591	635	F635	635ZZ	F635ZZ	2RS	2RU	—	—	—	
																				MR115
6.0	0.2362	10	0.3937	11.2	0.4409	0.15	0.0059	2.5	0.0984	0.6	0.0236	MR106	MF106	MR106ZZ	MF106ZZ	—	—	—	—	
												MR106	MF106	MR106ZZ	MF106ZZ	—	—	TTS <sup>4)</sup>		
		12	0.4724	13.2*	0.5197	0.15	0.0059	3.0	0.1181	0.6	0.0236	MR126	MF126	MR126ZZ	MF126ZZ	2RS	2RU	—	—	
												MR126	MF126	MR126ZZ	MF126ZZ	2RS	2RU	—		
		13	0.5118	15.0	0.5906	0.15	0.0059	3.5	0.1378	1.0	0.0394	686	F686	686ZZ	F686ZZ	2RS	2RU	TTS	—	
												MR126	MF126	MR126ZZ	MF126ZZ	2RS	2RU	—		
		15	0.5906	17.0	0.6693	0.20	0.0079	5.0	0.1969	1.2	0.0472	696	F696	696ZZ	F696ZZ	2RS	2RU	TTS	—	
												MR126	MF126	MR126ZZ	MF126ZZ	2RS	2RU	—		
		16	0.6299	—	—	0.20	0.0079	5.0	0.1969	—	—	696AZ	—	696AZ	—	2RS	2RU	—		
												MR126	MF126	MR126ZZ	MF126ZZ	2RS	2RU	—		
	17	0.6693	19.0	0.7480	0.30	0.0118	6.0	0.2362	1.2	0.0472	606	F606	606ZZ	F606ZZ	2RS	2RU	—			
											MR126	MF126	MR126ZZ	MF126ZZ	2RS	2RU	—			
	19	0.7480	22.0	0.8661	0.30	0.0118	6.0	0.2362	1.5	0.0591	626	F626	626ZZ	F626ZZ	2RS	2RU	TTS <sup>4)</sup>			
											MR126	MF126	MR126ZZ	MF126ZZ	2RS	2RU	—			
	22	0.8661	—	—	0.30	0.0118	7.0	0.2756	—	—	636	—	636ZZ	—	2RS	2RU	—			
											MR126	MF126	MR126ZZ	MF126ZZ	2RS	2RU	—			
7.0	0.2756	11	0.4331	12.2	0.4803	0.15	0.0059	2.5	0.0984	0.6	0.0236	MR117	MF117	MR117ZS	MF117ZS	—	—	—	TTS	
												MR117	MF117	MR117ZS	MF117ZS	—	—	TTS		
		13	0.5118	14.2*	0.5591	0.15	0.0059	3.0	0.1181	0.6	0.0236	MR137	MF137	MR137ZZ	MF137ZZ	—	—	—	TTS	
												MR137	MF137	MR137ZZ	MF137ZZ	—	—	TTS		
		14	0.5512	16.0	0.6299	0.15	0.0059	3.5	0.1378	1.0	0.0394	687	F687	687ZZ	F687ZZ	2RS	2RU	TTS		
												MR137	MF137	MR137ZZ	MF137ZZ	—	—	TTS		
		17	0.6693	19.0	0.7480	0.30	0.0118	5.0	0.1969	1.2	0.0472	697	F697	697ZZ	F697ZZ	2RS	2RU	—		
												MR137	MF137	MR137ZZ	MF137ZZ	—	—	TTS		
		19	0.7480	22.0	0.8661	0.30	0.0118	6.0	0.2362	1.5	0.0591	607	F607	607ZZ	F607ZZ	2RS	2RU	TTS <sup>4)</sup>		
												MR137	MF137	MR137ZZ	MF137ZZ	—	—	TTS		
	22	0.8661	25.0	0.9843	0.30	0.0118	7.0	0.2756	1.5	0.0591	627	F627	627ZZ	F627ZZ	2RS	2RU	TTS			
											MR137	MF137	MR137ZZ	MF137ZZ	—	—	TTS			
	26	1.0236	—	—	0.30	0.0118	9.0	0.3543	—	—	637	—	637ZZ	—	2RS	2RU	—			
											MR137	MF137	MR137ZZ	MF137ZZ	—	—	TTS			
8.0	0.3150	12	0.4724	13.2*	0.5197	0.15	0.0059	2.5	0.0984	0.6	0.0236	MR128	MF128	MR128ZZ	MF128ZZ	—	—	—	TTS	
												MR128	MF128	MR128ZZ	MF128ZZ	—	—	TTS		
		14	0.5512	15.6	0.6142	0.15	0.0059	3.5	0.1378	0.8	0.0315	MR148	MF148	MR148ZZ	MF148ZZ	2RS	2RU	—		
												MR148	MF148	MR148ZZ	MF148ZZ	2RS	2RU	—		
		16	0.6299	18.0	0.7087	0.20	0.0079	4.0	0.1575	1.0	0.0394	688	F688	688ZZ	F688ZZ	2RS	2RU	TTS		
												MR148	MF148	MR148ZZ	MF148ZZ	2RS	2RU	—		
		19	0.7480	22.0	0.8661	0.30	0.0118	6.0	0.2362	1.5	0.0591	698	F698	698ZZ	F698ZZ	2RS	2RU	—		
												MR148	MF148	MR148ZZ	MF148ZZ	2RS	2RU	—		
		22	0.8661	25.0	0.9843	0.30	0.0118	7.0	0.2756	1.5	0.0591	608	F608	608ZZ	F608ZZ	2RS	2RU	TTS		
												MR148	MF148	MR148ZZ	MF148ZZ	2RS	2RU	—		
	24	0.9449	—	—	0.30	0.0118	8.0	0.3150	—	—	628	—	628ZZ	—	2RS	2RU	—			
											MR148	MF148	MR148ZZ	MF148ZZ	2RS	2RU	—			
	28	1.1024	—	—	0.30	0.0118	9.0	0.3543	—	—	638	—	638ZZ	—	2RS	2RU	—			
											MR148	MF148	MR148ZZ	MF148ZZ	2RS	2RU	—			
9.0	0.3543	14	0.5512	15.5	0.6102	0.10	0.0039	3.0	0.1181	0.8	0.0315	679	F679	679ZS	F679ZS	—	—	—	TTS	
												MR148	MF148	MR148ZZ	MF148ZZ	2RS	2RU	—		
		17	0.6693	19.0	0.7480	0.20	0.0079	4.0	0.1575	1.0	0.0394	689	F689	689ZZ	F689ZZ	2RS	2RU	—		
												MR148	MF148	MR148ZZ	MF148ZZ	2RS	2RU	—		
		20	0.7874	23.0	0.9055	0.30	0.0118	6.0	0.2362	1.5	0.0591	699	F699	699ZZ	F699ZZ	2RS	2RU	—		
												MR148	MF148	MR148ZZ	MF148ZZ	2RS	2RU	—		
		24	0.9449	27.0	1.0630	0.30	0.0118	7.0	0.2756	1.5	0.0591	609	F609	609ZZ	F609ZZ	2RS	2RU	—		
												MR148	MF148	MR148ZZ	MF148ZZ	2RS	2RU	—		
	26	1.0236	—	—	0.60 <sup>5)</sup>	0.0236 <sup>5)</sup>	8.0	0.3150	—	—	629	—	629ZZ	—	2RS	2RU	—			
											MR148	MF148	MR148ZZ	MF148ZZ	2RS	2RU	—			
	30	1.1811	—	—	0.60	0.0236	10.0	0.3937	—	—	639	—	639ZZ	—	2RS	2RU	—			
											MR148	MF148	MR148ZZ	MF148ZZ	2RS	2RU	—			

Width: B <sub>1</sub>	Flange Width: Bf <sub>1</sub>	Load Rating		Max. Speed		Cage Type	Ball Complement			Weight (Reference)			
		Cr(N)	Cor(N)	Grease	Oil		Qty.:Z	Size:Dw		Open	Flange Open	Shield	Flange Shield
								mm	inch				